



## Integrated Power System (IPS)

Argus introduces the IPS Series, the ultimate "all-in-one" powering solution for wireless communications.

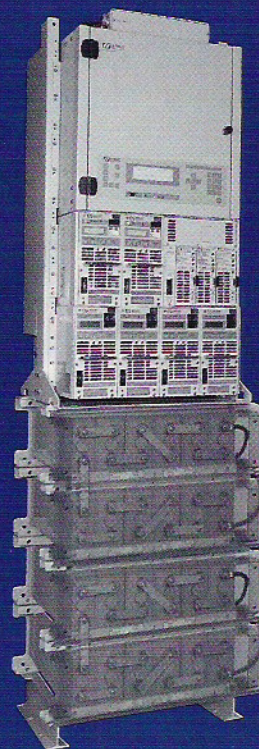
**Seamless system integration** By combining the capabilities of distribution, supervision, rectifiers, DC-DC converters and optional batteries in a seamlessly integrated package, IPS allows you to completely control the entire power system within one single, easy-to-use environment.

**Designed for flexibility** Today's ever-changing communications network demands flexibility. With IPS, DC power systems grow incrementally with your communications equipment. The IPS Series' modular design lets you easily swap components in and out, upload new software, and program new parameters through the system's user-friendly LCD interface. The IPS can also be equipped with a non-programmable, analog controller.

**More advanced features** The IPS Series comes with more advanced features than any other power system on the market today. The complete platform includes the industry-leading SM02 supervisory panel, a 54-position distribution center with a load disconnect, and high efficiency, field proven RSM rectifiers and CSM converters. And you can choose either a rack or battery mount design.

**Safe, easy installation and setup** IPS saves you time and money because it's delivered fully assembled and factory tested. In addition, its front access design provides safe, easy installation and maintenance. All you need to do is to hook up load connections, program a few software adjustments and you're on your way.

IPS Series



800A capacity

Available in 48, 24, 48/24 or 24/48 VDC output

Fits up to 54 circuit breakers

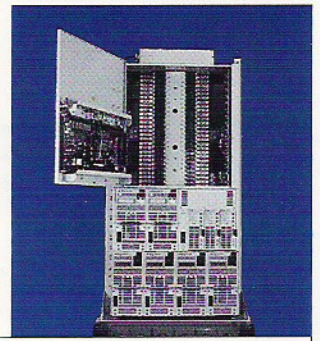
Completely front accessible

Intelligent supervision and communications

**Communications for local and remote control/ monitoring**

The IPS Series offers complete monitoring and control functions through its intelligent supervisory panel. Local terminal access is provided through an RS-232 port, while LAN and modem communications are also supported for remote access.

**Support when you need it most** The IPS Series is backed by the industry's leading warranty and customer care program. All Argus' products are covered by a comprehensive 24-month factory parts and service warranty. And technical support experts are available 24 hours-a-day, 7 days-a-week to aid in the resolution of technical problems. Add Argus' unparalleled reputation for building reliable, long-lasting power systems, and you have a product that is second to none.



## IPS Series

### Specifications

#### Electrical

Input voltage:	176 to 264 VAC, 47 to 63Hz (UPF)
Output voltage:	21 to 30 VDC (RSM 24/100 rectifiers) 42 to 60 VDC (RSM 48/50 rectifiers) 44 to 52 VDC (CSM01 converters) 22 to 26 VDC (CSM02 converters)
Output Current:	105A max per RSM 24/100 rectifier (55A for RSM 48/50) 5A max per CSM01 converter (10A for CSM02)
Power:	3000W max per rectifier module 260W max per converter module
AC input:	Individual feeds pre-wired from AC junction box
Max. bus capacity:	800A
Breakers:	54-position, magnetic- type, 1 to 100A
Circuit breaker output termination:	2 x 1/4-20 studs on 5/8" centers
Battery termination:	3/8-16 threaded inserts on 5/8" centers
Ground bar:	54 sets of 2 x 1/4-20 threaded inserts on 5/8" centers
Alarm connections:	0.34 to 2.5mm <sup>2</sup> (#14 to #22 AWG)
Cable access:	Top

#### Mechanical

Enclosure:	1.095mm (14 gauge) steel
Mounting:	Mounts in std 23" relay rack (center or flush rack mount) or on battery stand
Dimensions: cm (inches)	116 H x 58 W x 38 D (45.5" H x 23" W x 15" D)
Weight:	Approx. 225 kg (500 lb) includes 800A Distribution Center, and fully loaded RCS, and RSM 24/100 cabinet

#### Environmental

Temperature:	0 to 50°C (32 to 177°F)
Humidity:	0 to 90% R.H. non-condensing
Elevation:	-500 to 2800m (-1640 to 9180 ft)

#### System level alarms/controls

Alarms/control parameters are user-programmable through built-in digital supervisory unit. See SM02 datasheet #048-525-10 for detailed information on alarms and controls available. A non-programmable, analog supervisory unit can be substituted for the SM02. See datasheet #048-042-10 for more information on this option.

#### System level

indicators: LCD with graphics capability  
System OK  
System major alarm  
System minor alarm

#### Rectifiers

Choose up to six RSM 24/100 or 48/50 rectifiers (see datasheet # 048-516-10)

#### Converters

Choose up to three CSM01 or CSM02 DC-DC converters (see datasheet #048-504-10 or #048-523-10)

#### Load Disconnect

24 or 48 VDC/800A mounted on load side

### Ordering Information

Please consult the factory for customized configurations and detailed ordering information.

Each power system is assigned an individual part number. The list below represents a majority of the system components.

Part #	Model Description
020-568-20	54-Position 800A UDC
030-566-20	Rectifier-Converter Cabinet (fits 2 x RSM 24/100 and 3 x CSM01)
010-525-20	RSM 24/100 Power Module (UPF)
010-029-20	RSM 24/100 Power Module (non-UPF)
030-502-20	RSM 24/100 Cabinet, 23" (fits 4 modules)
010-511-20	RSM 48/50 Power Module (UPF)
010-030-20	RSM 48/50 Power Module (non-UPF)
030-501-20	RSM 48/50 Cabinet, 23" (fits 4 modules)
012-501-20	CSM01 Converter Power Module
012-502-20	CSM02 Converter Power Module

Due to continuing product improvements, Argus reserves the right to change specifications without notice.

Argus Technologies  
5700 Sidley Street  
Burnaby, B.C. V5J 5E5  
Canada  
Tel: (604) 436-5900  
Fax: (604) 436-1233  
Email: sales@argus.ca

Argus Technologies  
3767 Alpha Way  
Bellingham, WA  
98225 U.S.A.  
Tel: (360) 647-2360  
Fax: (360) 671-7096

Web site: www.argus.ca

ISO 9000 registered